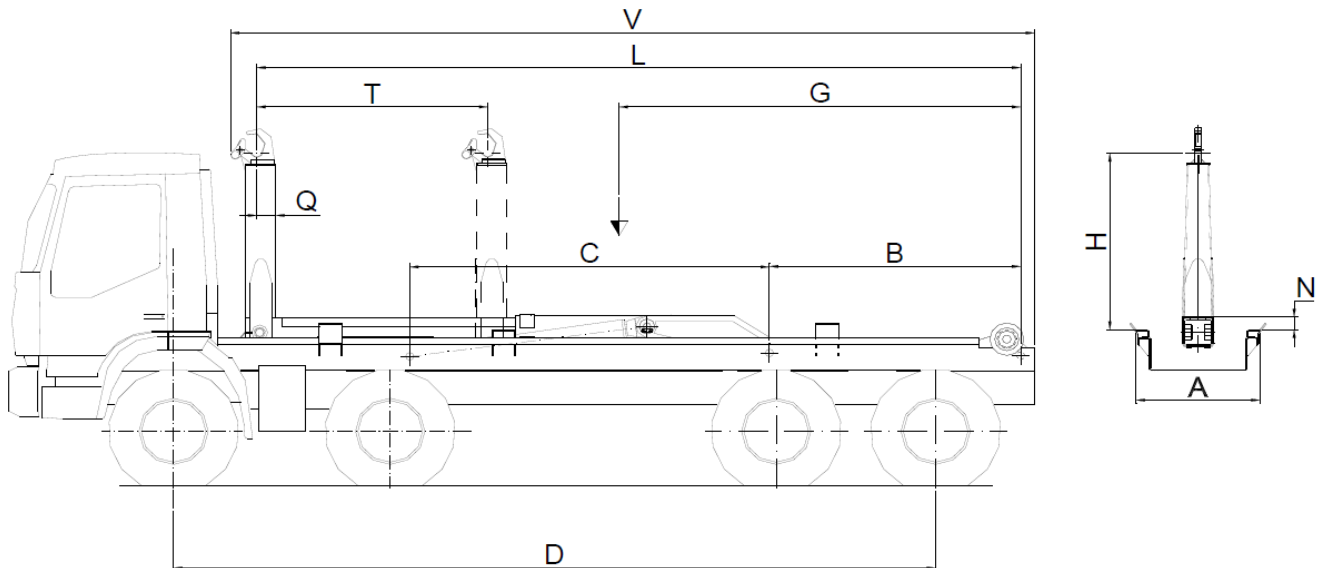




DANIMA
engineering

HOOKLOADER EQUIPMENT DRL-30/84



Technical Data

Hook Height H=	1.600 mm
Container guides Width A=	1.065 mm
Tipping Angle	48 °
V=.....	7.788 mm
L=.....	7.442 mm
T=.....	2.000 mm
N=	140 mm
B=.....	2.400 mm
C=	3.717 mm
M=.....	375 mm
Q=	165 mm

Weight and Gravity Center (1)

Equipment Weight	3.800 Kg
Gravity Center G=.....	3.700 mm
Load Capacity (with container)	30.000 Kg

Hydraulic System

Pump Flow	80 cm ³ /rev
Working Pressure	300 Kg/cm ²
Hydraulic Power.....	60 CV to 300 Kg/cm ²

Capacities

Oil Tank Capacity.....	80 l.
------------------------	-------

Maneuver Times

(values at 1000 r.p.m.)

Tipping Time	70 sec.
Loading Time	60 sec.

Cab Chassis

Dimensions & Weights

M.P.W.	32.000 to 38.000 Kg.
Distance between axles D=	6.700 to 7.200 mm

Containers

Minimum Length.....	6.500 mm
Maximum Length.....	8.400 mm

(1) FEATURES REFERRED TO EQUIPMENT WITHOUT INSTALLATION

IMPORTANT: CHASSIS MUST BE PROVIDED WITH POWER TAKE-OFF.

NOTE. - All the information included in this technical data is only for information purposes and has not a contractual value.
Danima reserves the right to modify the specifications without notice